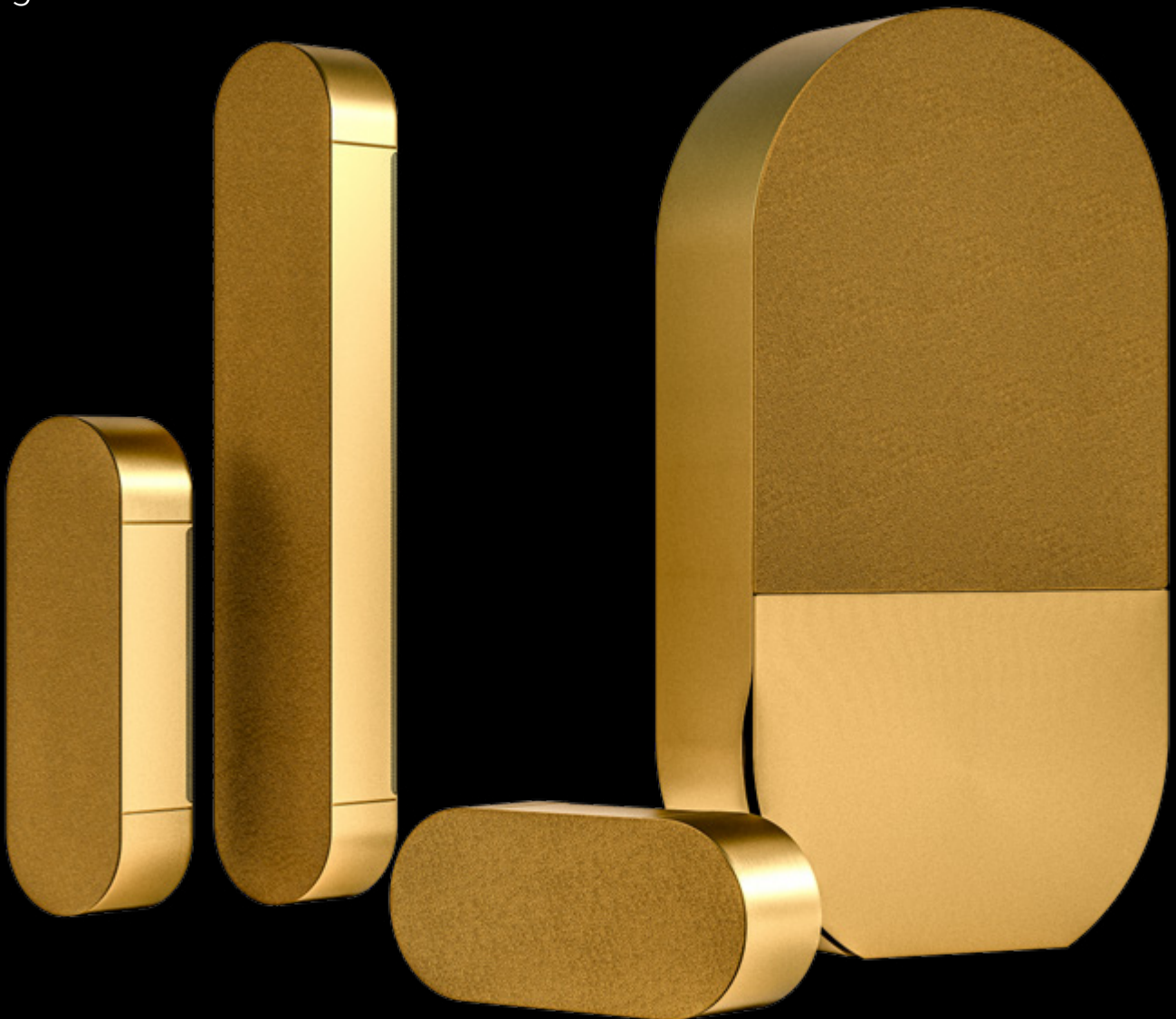


CAPSULE



FRENCHFLAIR
AUDIO

The new Capsule series synthesises FrenchFlair Audio's philosophy and DNA; audio solutions thought for the architectural world and not making any compromise on the sound. Featuring a cardioid dispersion, the speakers will help creating immersive sound schemes and will blend in the most exquisite interiors thanks to their modern and tendance design.



CAPSULE 31

«Sound capsule»



Cardioid Fullrange speaker
2 ways - 3" + 1" tweeter
Power: 60 W
Response: 200-20kHz

Connector - Euroblock
Material: Aluminum
Dimensions: 232x100x71mm
Weight: 1.6 kg net

CAPSULE 32

«Wall fixture... but for sound !»



Cardioid Fullrange speaker
2 ways - 2x3" + 1" tweeter
Power: 120W
Response: 180-20kHz

Connector - Euroblock
Material: Aluminum
Dimensions: 312 x 100 x 71 mm
Weight: 2.1 kg net



CAPSULE 44

«Diffusion in wider spaces»



Cardioid Fullrange speaker
2 ways - 4x3" + HF Horn
Power: 180W
Response: 160-20kHz

Connector - Euroblock
Material: Aluminum
Dimensions: 552 x 100 x 71 mm
Weight: 4.7 kg net

CAPSULE S6

«Roundness and sonic comfort»

Subwoofer
6" Woofer + 8" passive radiator
Power: 200W
Response: 45-200Hz

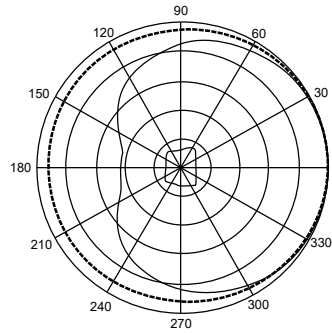
Connector - Euroblock
Materials: Wood + Aluminum
Dimensions: 542 x 280 x 124 mm
Weight: 9,9 kg net



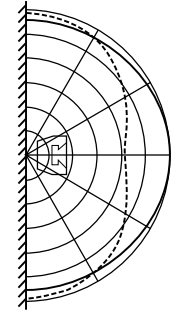
Elegant and compact, the Capsule series will blend within refined and distinguished interiors. The various models give numerous options to design and plan sound solutions for intimate bars and restaurants or larger scale venues. The capsule speakers are ideal for a hotel lobby, for the extension of the sonic experience in adjoining rooms, reception halls or workspaces. Their esthetical versions will adapt to any of your spaces.

Acoustics

The speakers feature a cardioid dispersion that benefits the emission of low and medium frequencies towards the front. This technology does naturally greatly minimize the effect of rear interferences (SBIR : speaker boundary interference response). Mounted on a wall, they produce a natural and homogeneous response.



Free-field directivity

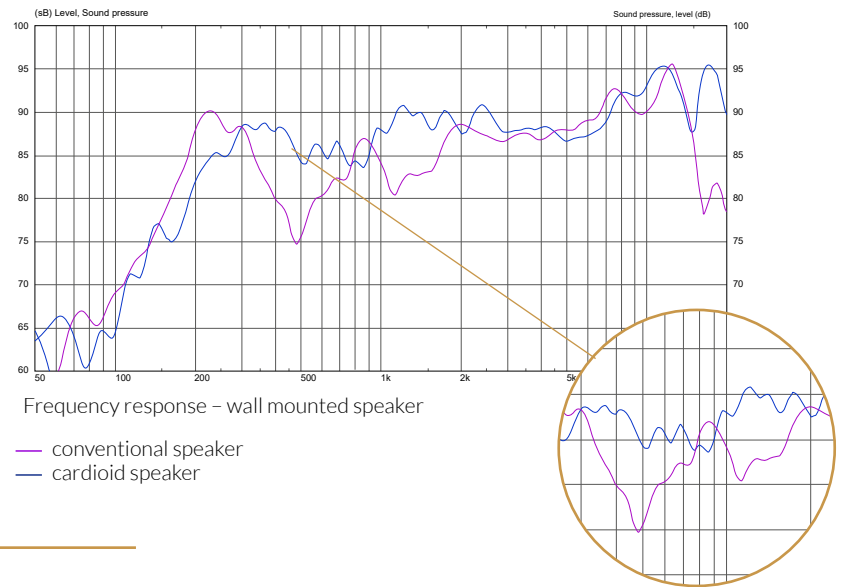


Directivity on a wall:

--- conventional speaker
— cardioid speaker

SBIR speaker boundary interference response.

All speakers placed against a wall are subject to destructive acoustic effects. The interferences between the front and the rear of the speakers (ie the wall) create « holes » in the acoustic response within frequency ranges that are very important for the diffusion of music or vocal messages. Cardioid technology does lower this SBIR effect.



Frequency response - wall mounted speaker

— conventional speaker
— cardioid speaker

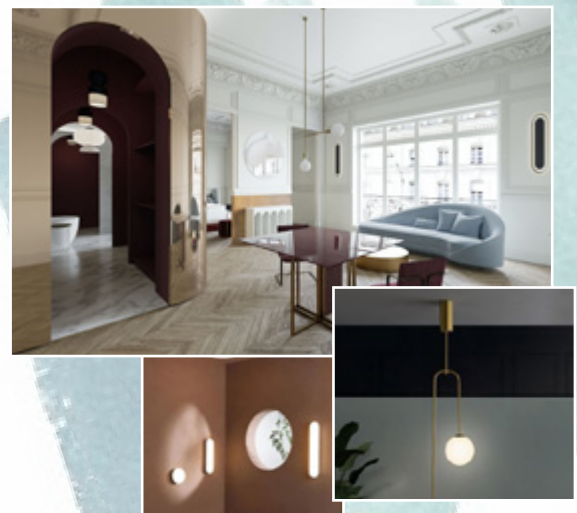
Placement in spaces

The Capsule speakers will be installed on walls, in the vast majority of cases. A wall plate is included with all our products. This wall plate, providing very shallow mounting, is proposed in white or black versions.

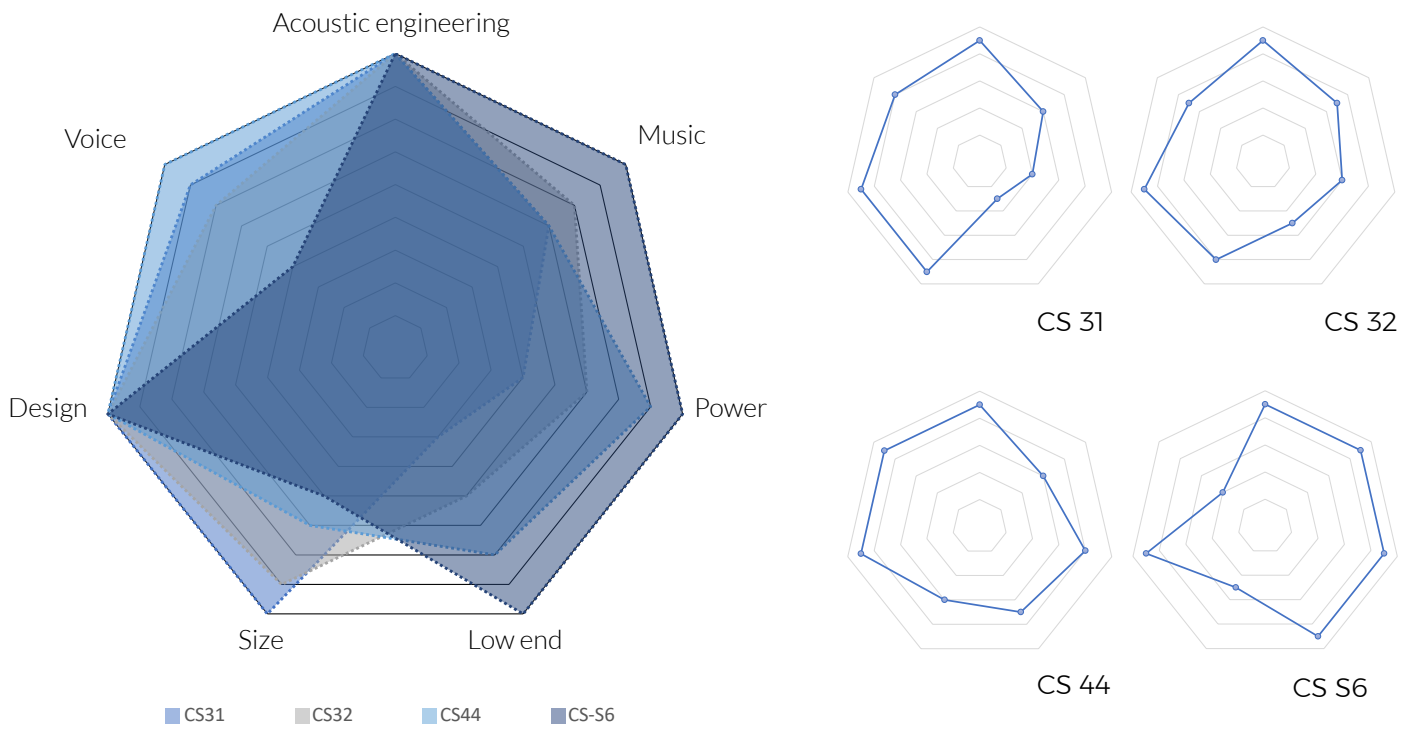
Focused on providing the most versatile solutions for the placement of speakers within spaces, we are constantly working on different rigging solutions. More optional solutions will be proposed in our portfolio accompanying the capsule series.

Design & Finish options

The Capsule series draw on the codes of architecture and the lighting industry. We took inspiration from today's design and decoration trends. Made of aluminum, the speakers are painted with an anodized effect. The front grill is covered with textured acoustic fabrics, that feature a tone very similar to the colour of the speaker's body. Our capsule models will be proposed in White, Silver, Copper, Gold, Bronze, and Black.



Moodboard - Capsule



Capsule 31, Capsule 32 and Capsule S6: shipping in september 2022
 Capsule 44: shipping in december 2022

Commitments and values

Our products have been designed, developed, prototyped and assembled in our factory in Lyon since 2013.

We bring eco-conception in the making of our products. Using materials that are recyclable, allowing replacement of most parts and also minimizing the use of plastics in our packagings.

FrenchFlair Audio is engaged for the quality of our sonic environnement, and our environnement.



FRENCHFLAIR
AUDIO

+33 1 69 10 20 55 - info@frenchflairaudio.com - www.frenchflairaudio.com
 Le Parc de l'Événement - 1, Allée d'Effiat
 91160 Longjumeau - France